

# DESERT BOTANICAL GARDEN



## PRESS KIT

FALL 2021



DESERT  
BOTANICAL  
garden®

# Overview

## THE GARDEN:

Discover the tranquil vibrancy of 50,000 desert plants nestled amid the red rocks of the Papago Buttes at Desert Botanical Garden. Visitors can stroll through five thematic trails to explore plants, including towering cactus, alluring succulents and brilliant desert wildflowers. Delve deeper to experience world-class art exhibitions, festive events and so much more.

## MISSION:

The Garden's commitment to the community is to advance excellence in education, research, exhibition and conservation of desert plants of the world with emphasis on the Sonoran Desert. We will ensure that the Garden is always a compelling attraction that brings to life the many wonders of the desert.

## CONTACT:

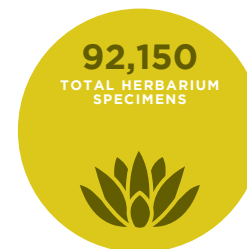
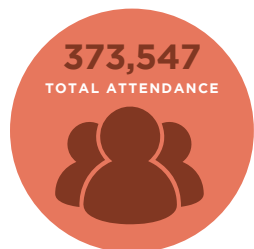
1201 N. Galvin Parkway, Phoenix, AZ 85008 | [dbg.org](http://dbg.org) | 480.941.1225

## MEDIA CONTACT:

Dana Terrazas, Director of Marketing Communications

W: 480.481.8101 | C: 602.295.5177 | [dterrazas@dbg.org](mailto:dterrazas@dbg.org)

## YOUR GARDEN | BY THE NUMBERS *(As of 2020)*:



# History

In the 1930s, a small group of passionate local citizens saw the need to conserve the beautiful desert environment. One was Swedish botanist Gustaf Starck, who found like-minded residents by posting a sign that said “Save the desert,” with an arrow pointing to his home. More than eight decades later, thanks to leadership and investments from many individuals, Desert Botanical Garden has blossomed from a dream into a living museum unlike any other. See how the Garden has grown during its history into a compelling attraction and desert conservation pioneer.

	<p><b>1947</b> Gertrude Webster dies leaving her estate to support the Garden.</p>		<p><b>1970</b> The new library is built to house a valuable donation of rare books and prints.</p>		<p><b>1983</b> The American Association of Museums accredits the Garden.</p>	
<p><b>1939</b> The Garden opens its doors to the public.</p>		<p><b>1957</b> The Garden's collection increases from 1,000 to more than 18,000 specimens.</p>		<p><b>1977</b> The Docent Program is established.</p>		<p><b>1985</b> The Garden becomes a charter member of the Center for Plant Conservation.</p>
<p><b>1988</b> Plants and People of the Sonoran Desert Loop Trail opens.</p>		<p><b>2008</b> Ottosen Entry Garden opens.</p>		<p><b>2009</b> Joy and Howard Berlin Agave Yucca Forrest opens.</p>		<p><b>2015</b> The Garden hosts its first nighttime only exhibition by Bruce Munro.</p>
	<p><b>2002</b> The Garden completes a \$17 million expansion.</p>		<p><b>2008</b> Dale Chihuly's exhibition draws more than 500,000 people to the Garden.</p>		<p><b>2013</b> The Garden celebrates its 75<sup>th</sup> Anniversary.</p>	
	<p><b>2018</b> Electric Desert   A Light and Sound Experience by Klip Collective sees nearly 200,000 visitors.</p>		<p><b>2020</b> Wild Rising by Cracking Art invades the Garden.</p>			
<p><b>2017</b> New Butterfly Exhibit and Hazel Hare Center for Plant Science open.</p>		<p><b>2019</b> Desert Botanical Garden celebrates its 80<sup>th</sup> Anniversary.</p>		<p><b>2021</b> Natasha Lisitsa and Daniel Schultz of Waterlily Pond Studio debut Wind, Water and Earth at the Garden.</p>		

# Trails & Exhibitions

Desert Botanical Garden provides a world-class experience for every visitor. Through permanent trailside exhibits, temporary art installations and seasonal experiences, the Garden ignites discovery about the desert and the plants that have adapted to this fascinating ecosystem.

## TRAILS:

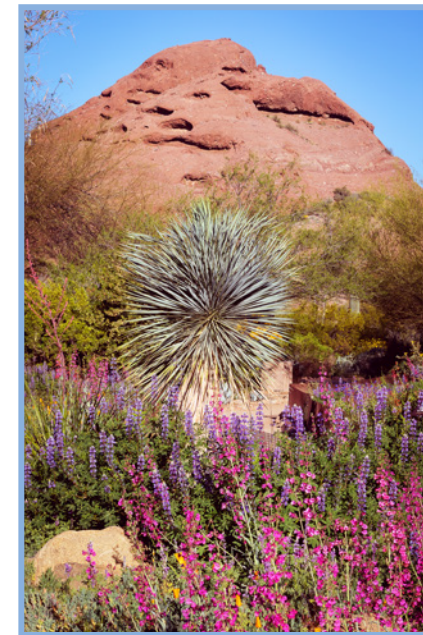
**DESERT DISCOVERY LOOP TRAIL** | Exhibits desert plants from around the world.

**PLANTS & PEOPLE OF THE SONORAN DESERT LOOP TRAIL** | Explores the use of desert plants for nourishment, cultural activities and tools.

**SONORAN DESERT NATURE LOOP TRAIL** | Illustrates the relationship between desert plants and animals.

**CENTER FOR DESERT LIVING LOOP TRAIL** | Displays ideas and strategies for sustainable ways to live with nature.

**Harriet K. Maxwell DESERT WILDFLOWER LOOP TRAIL** | Showcases the diversity of desert wildflowers.



# Events & Exhibits

## Fall Butterfly Exhibit



Mighty monarch butterflies return this fall. Experience a diverse kaleidoscope of butterflies from the Southwest, and discover the magnificence of the mighty monarch butterfly—from their amazing migration to the plants they need to survive.

## Cactus Clubhouse



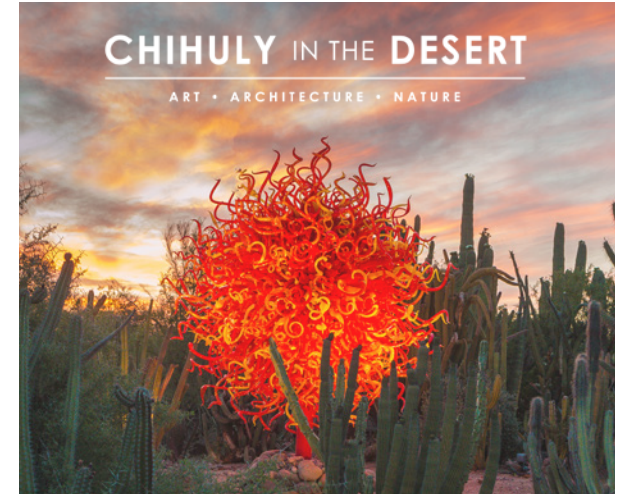
Desert Botanical Garden invites kids to engage with the outdoors around them at **Cactus Clubhouse**—a brand-new nature play space. The play area provides unstructured, child-led activities for kids under 12 to discover the fun of the natural world.

Throughout **Cactus Clubhouse**, kids encounter several activity areas designed to spark independent play, while encouraging physical, cognitive and behavioral growth.

The **Cactus Clubhouse** is made possible by grants from the USDA Forest Service and the Pharos Foundation in collaboration with Dimensions Educational Research Foundation.

The **Cactus Clubhouse** is a Certified Nature Explore Classroom. More information at [natureexplore.org](http://natureexplore.org).

## Chihuly in the Desert



Dale Chihuly returns to the Sonoran Desert with a stunning new exhibition at two of Arizona's most iconic venues, Desert Botanical Garden and Frank Lloyd Wright's Taliesin West.

Combining art, architecture, and nature, **Chihuly in the Desert** is set against majestic saguaros, the striking Papago buttes, and a World Heritage site. Chihuly's masterpieces stun from day to night as color, light, and form come alive for the first time ever at two locations for a joint exhibition.

# Signature Events

## Music in the Garden



*Ages 21 and older*

Desert Botanical Garden offers an exciting and diverse lineup of talented performers in the Spring and Fall Music in the Garden concert series.

## Fall & Spring Plant Sales



*Free Admission*

Don't let 30,000 plants intimidate you! On-site horticulture experts will help you find the perfect cactus, agave and ornamental to plant in your own garden.

## Dog Days at the Garden



Early risers are invited to bring their whole pack to the trails mornings. Treat your dog to a morning stroll at the Garden. You and your pup will have a tail-wagging good time exploring all the beauty and sniffs of the Garden.

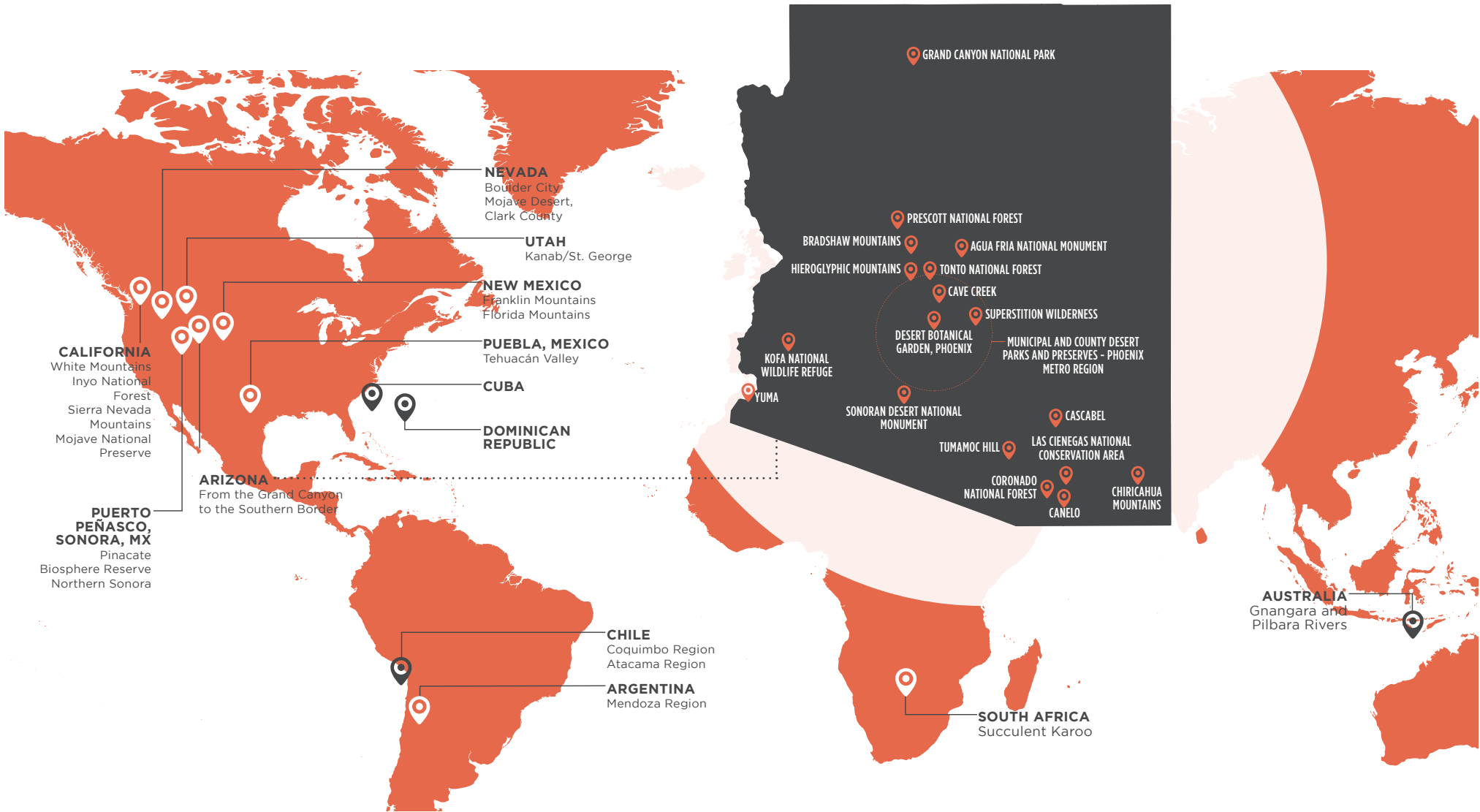
## Las Noches de las Luminarias



Experience the simplicity and beauty of Las Noches de las Luminarias this holiday season with 8,000 flickering luminarias and twinkling lights throughout the Garden. Enjoy a festive drink while listening to holiday melodies.

# Research & Conservation

The International Union for Conservation of Nature (IUCN) identified cactus as one of the most threatened groups of living organisms, but the Garden is working to protect and conserve these treasured desert plants and many others. The Garden's researchers often collaborate internationally, as well as with federal and state agencies, including the Bureau of Land Management, U.S. Fish and Wildlife Service and the National Parks Service, to protect Arizona flora and habitat.



**GARDEN SCIENTISTS ARE FULFILLING OUR MISSION** THROUGH PROJECTS IN ARID REGIONS AROUND THE

# Overview



- Accredited by the American Association of Museums
- Founding member of the Center for Plant Conservation
- Designated by popular vote in 1993 as a “Phoenix Point of Pride”
- Named one of “Arizona’s Treasures” by Governor Janet Napolitano in 2005





**STAY UP TO DATE WITH THE  
LATEST GARDEN NEWS  
AT [DBG.ORG](http://DBG.ORG)**